

THE NEW "FINELINE" FACADE SYSTEM WILL CHANGE YOUR VIEW OF THINGS.

Because there's a great deal of life behind it.



Fineline

THE INSIDE-OUTSIDE FACADE



FROM GERMANY'S MARKET LEADER IN ALUMINUM CLAD WOOD WINDOWS AND DOORS:

The upright-transom facade system with double the fasc

inside

cosy wood

A system with two fascinating sides.

A system for private or public buildings.

FineLine

THE ARCHITECTONIC COMBINATION OF PROTECTION AND A FEE

A system with inspiring service.

A system from a reliable partner.



A system with inexhaustible creativity.

A system with well thought-out details.

A system with a clear design.

outside

aluminum protection

LING OF WELL-BEING

A system with the diversity of life.

The system

- Facade inside as a supporting upright-transom construction made of solid timbers or wood materials
- Facade outside as a thermal insulating aluminum construction
- Infill possible with all normal types of glass, panels and opening elements
- Great range of use – from conservatories through small to large facades



THE INNOVATIVE ARCHITECTURAL MODULE FOR HIGH-QUALITY LIVING:

FineLine – two sides, one whole.



Finish:

Alder laminated bonded with upright section No. 13
and transom section No. 1.

Aluminum cover shell in RAL 7016 anthracite grey.

Upright section No. FADP 5005 and transom
section No. FADP 5001.



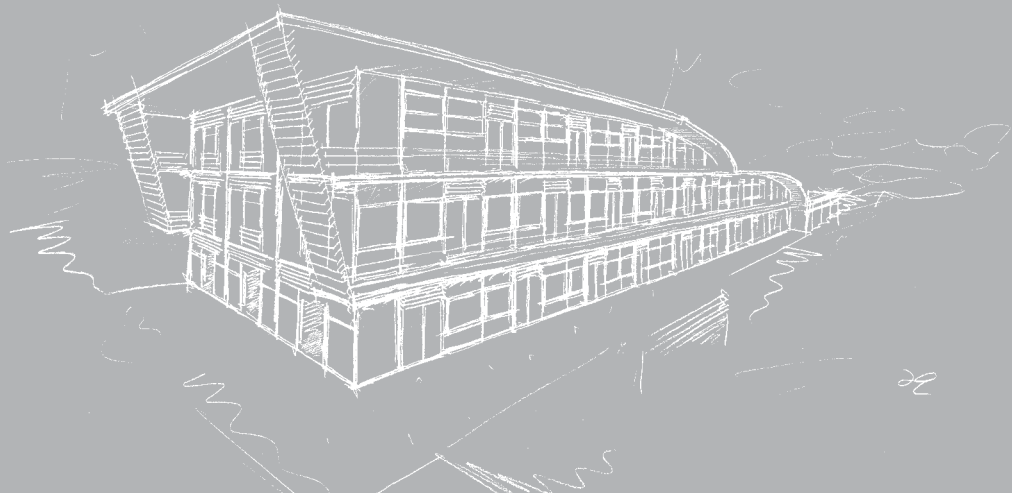
FROM THE SINGLE-FAMILY HOUSE TO THE MAJOR PROJECT:

FineLine - Facade design of the highest standard.



FineLine

THE INSIDE-OUTSIDE FACADE



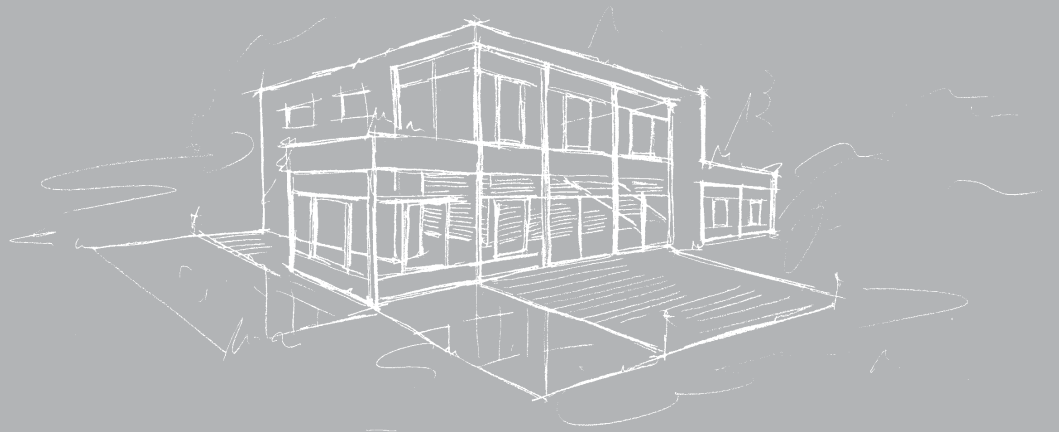
From your own home to a building complex. Wherever a special awareness of life and high standard are to be combined in the architecture, FineLine from UNILUX is your solution.

Wherever the outside and inside effect enter into an inseparable symbiosis.

The system's flexibility gives the most varied buildings a cultured way of living of the sophisticated kind in a special manner.



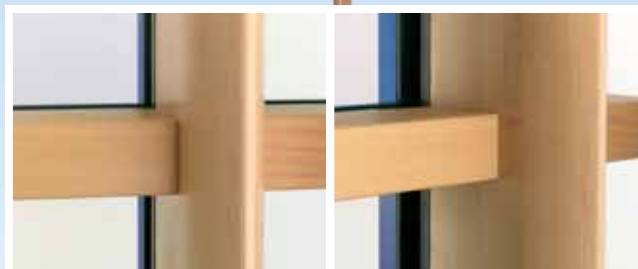
This is true for single-family and multiple-dwelling houses, schools and kindergartens, hospitals and old people's homes, company and administrative buildings, hotels and showrooms – whether as a facade, glass annex or conservatory



ARCHITECTURE MEETS INTERIOR DESIGN:

FineLine - the name is a programme.

inside
cosy wood



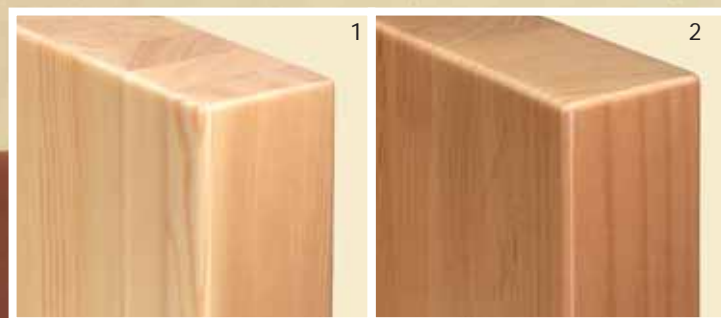
outside

aluminum protection



Wood...

19 woods and wood material types
13 wood sections



NATURAL AURA AND NOBLE APPEARANCE.

Wood is life.

Wood is the expression of life. In architecture it is a sign of a special awareness of life.

Its natural aura, its warmth and its noble appearance are shown to special advantage in FineLine.

CREATIVE SCOPE IN FORM, COLOUR AND MATERIAL:

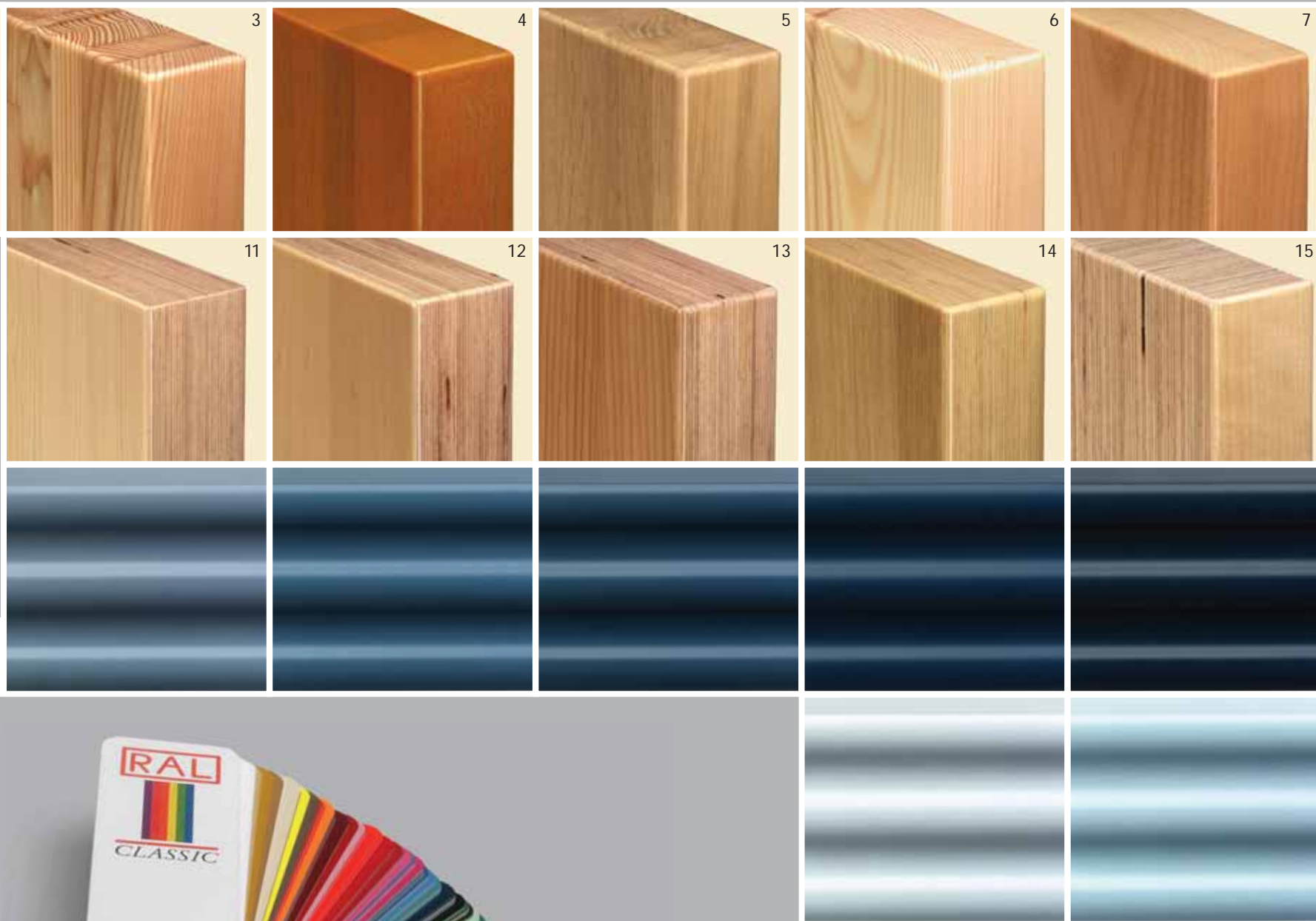
FineLine – out of love for creativity.

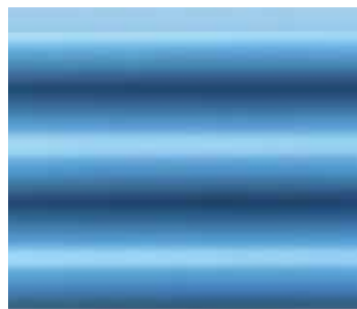
- 01 pine solid wood laminated bonded
- 02 alder solid wood laminated bonded
- 03 larch solid wood laminated bonded
- 04 meranti solid wood laminated bonded
- 05 oak solid wood laminated bonded

- 06 pine solid wood surface bonded
- 07 alder solid wood surface bonded
- 08 larch solid wood surface bonded
- 09 meranti solid wood surface bonded
- 10 oak solid wood surface bonded

- 11 UNI-PLEX pine veneered
- 12 UNI-PLEX alder veneered
- 13 UNI-PLEX larch veneered
- 14 UNI-PLEX oak veneered
- 15 UNI-LAYER birch laminated wood

- 16 UNI-LAYER Oregon Pine laminated wood
- 17 UNI-STRUCT laminated flat pressed board
- 18 UNI-LAM dense chip board
- 19 UNI-LAM veneered chip board





Well-known and yet quite new!

Aluminum shows itself in the FineLine programme from its most versatile side. Its exceptional variety of colours and interesting structure surfaces can be both the inspiration for new creative ideas and a widely diversified pool of choice for architectonic designs.

Just as the material gives creative inspiration in the FineLine System, its rational advantages are just as convincing: permanently weatherproof, practically maintenance-free and thus easy to care for.

Aluminum...

HIGH QUALITY AND RICH IN VARIANTS.

23 Aluminum – ceiling shells - sections
all RAL colours
all NCS colours
all anodising colours



SOLID WOOD STAGED PERFECTLY:

Architectonic quality shows itself in the detail.




Wall connection
with upright section
No. 13W



FineLine window
with mountings
completely concealed



90° inside corner

A close-up photograph of a wooden window frame and sill. The wood is a light, natural tone with a visible grain. The window frame is on the left, and the sill extends from it. A vertical wooden element, likely a transom or part of the frame, is positioned to the right of the sill. The floor is a light-colored, textured material, possibly laminate or wood-look flooring. The background is a bright, out-of-focus window showing a snowy landscape.

Floor connection with upright section No. 13
and transom section No. 01

THE FACADE WITH A DESIGN LEAD:

Aesthetically fine in every line.



Concealed FineLine
window casement
in tilted state



Base connection of the
aluminum covering shell with
upright section
No. FADP 5005
transom section
No. FADP 5001

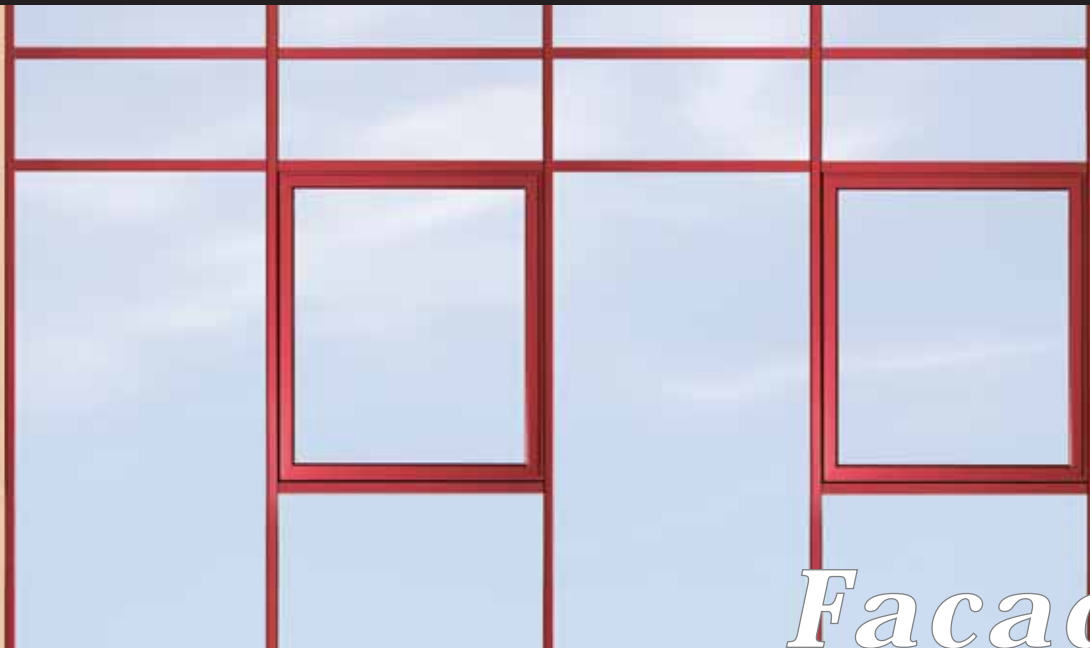


Innovative FineLine
window casement with
extremely narrow glass
structure, seal and
aluminum outside shell

Fitting detail FineLine window:
50 mm front width for
upright – transom
20 mm shade joint
50 mm front width for
FineLine window

THE HARMONIC UNITY OF FACADE AND WINDOW:

Aesthetic combinations for every style of architecture.



... combinable with "ModernLine"
aperture window



Facade windows



Facade and aperture windows



Facade and aperture windows

The FineLine window is the result of many years of development work. The perfect appearance in the facade with 50 mm upright-transom section, 20 mm shade joint and 50 mm window frame is proof of the accomplished design of the whole facade system - and at the same time the expression of a high architectonic standard. The casement section is completely concealed by the window frame.



FineLine

Anyone preferring charismatic window solutions has made the right choice with ModernLine. Also smooth and angular, it differs from the FineLine variant through the staggered layout of the frame and casement.



18
19

ModernLine

The triumphal march of UNILUX wood and aluminum competence began with this classic house window. Very successful in the market up to now, "LivingLine" with its smooth lines is an alternative, above all for single-family and multiple dwelling houses.

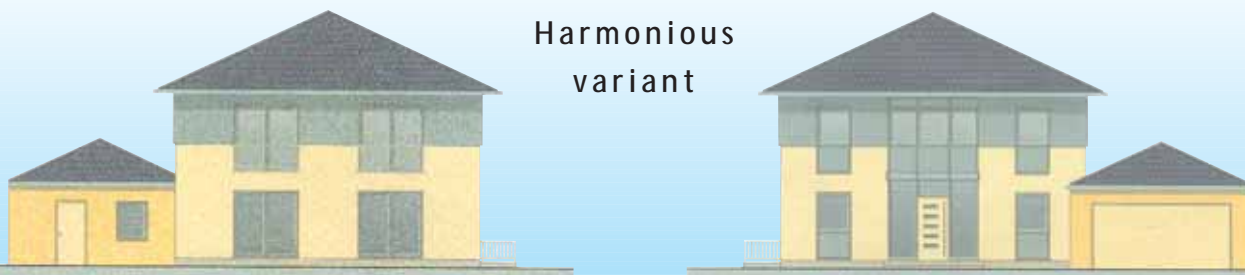


LivingLine

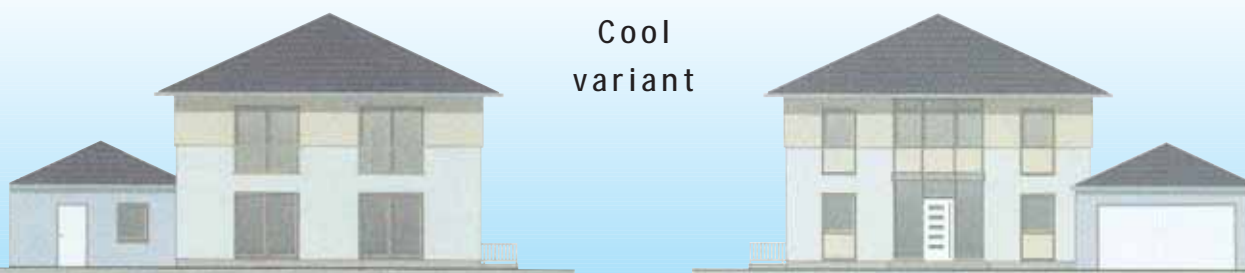
COLOURS MATCHED PERFECTLY FOR LIFE:

The UNILUX Colour Service – a service of a special kind.

Harmonious
variant



Cool
variant



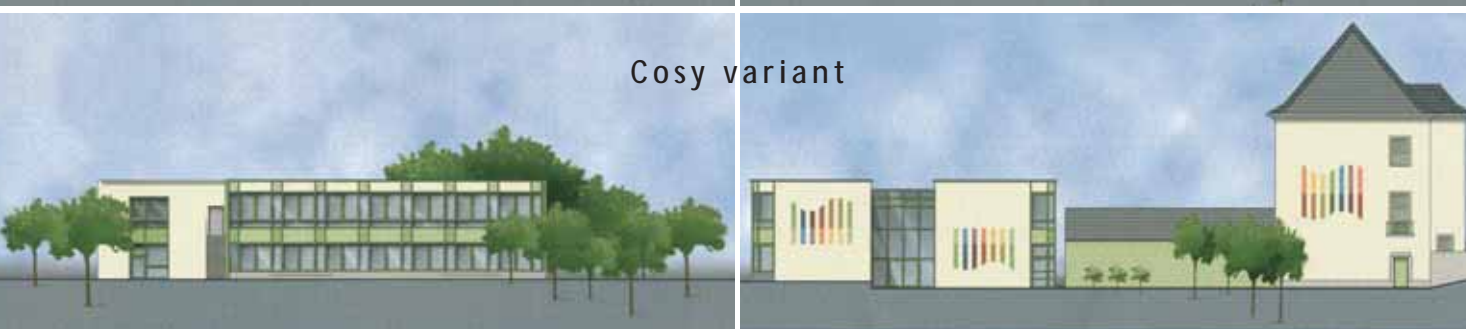
Warm
variant



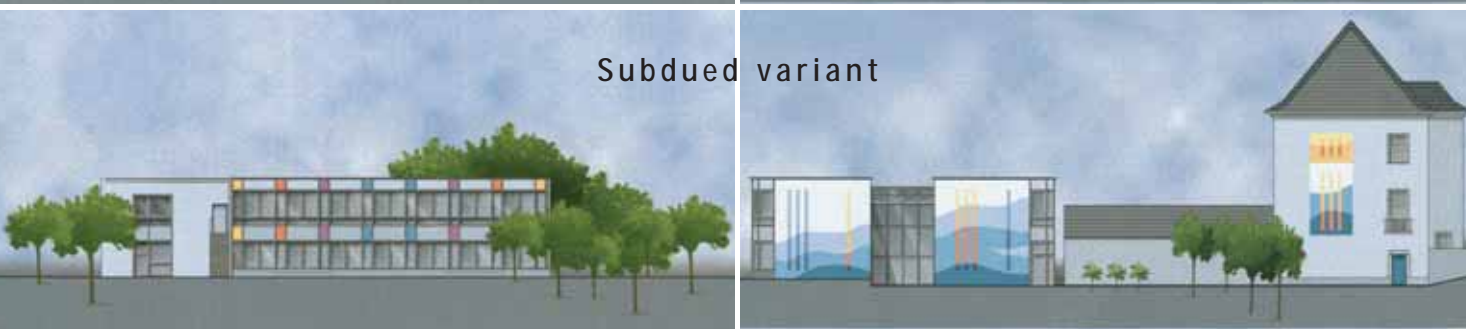
Active
variant



Cosy
variant



Subdued
variant





FineLine

THE INSIDE-OUTSIDE FACADE

Colour Service for a harmonious overall
Result

FineLine is not just simply a facade system. With its service it fits into an integral concept. See FineLine as a decisive and high-quality part of an architectonic overall result. The colour design service from UNILUX helps architects and property owners to plan a perfectly coloured building.

On the basis of an elevation plan, our specialists design in original colours and create an inspiring harmony in your building's appearance.



THE FINELINE SAMPLE CASE:

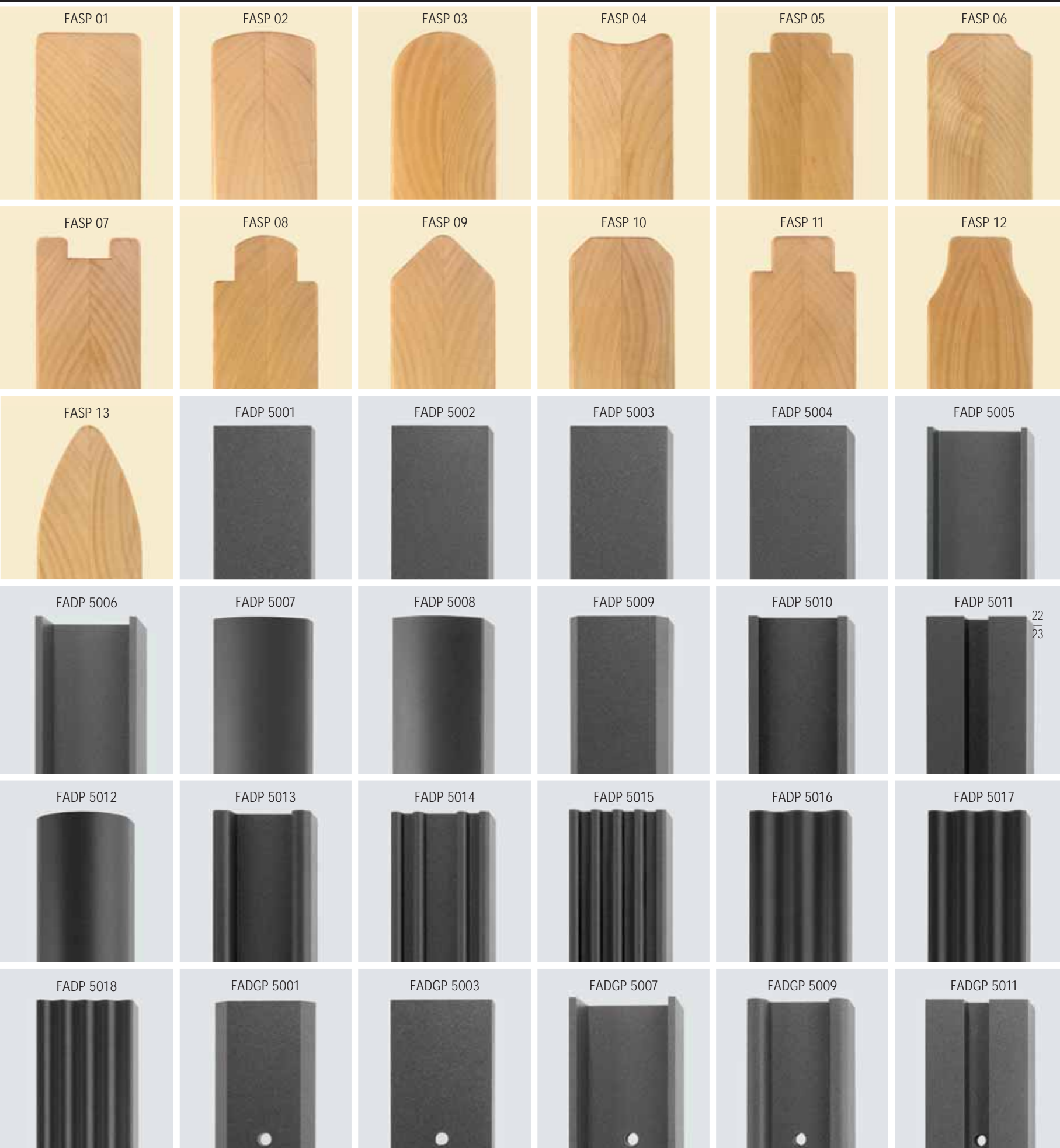
Materials, forms and colours for your ideas.



Fineline

FACADE DESIGN OF THE FUTURE AT A GLANCE

The presentation in its whole variety
Experience the fascinating world of the FineLine system. The FineLine sample case contains all the wood types and sections, all the aluminum ceiling shells and possibilities of choice of colours. The integrated system cross makes the system's technical lead visible.



SO THAT AN ARCHITECTONIC STANDARD CAN BE EASILY REALISED:

FineLine – the facade system with double the fascination.

FineLine

THE INSIDE-OUTSIDE FACADE

UNILUX AG
D-54528 Salmtal

Phone +49 (0)6578 189-0
Fax +49 (0)6578 1880

E-mail info@unilux.de
www.unilux.de

